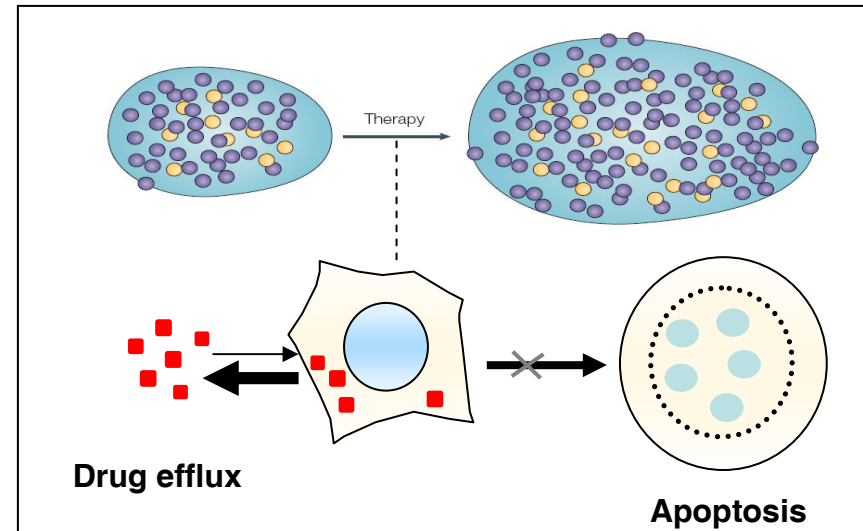
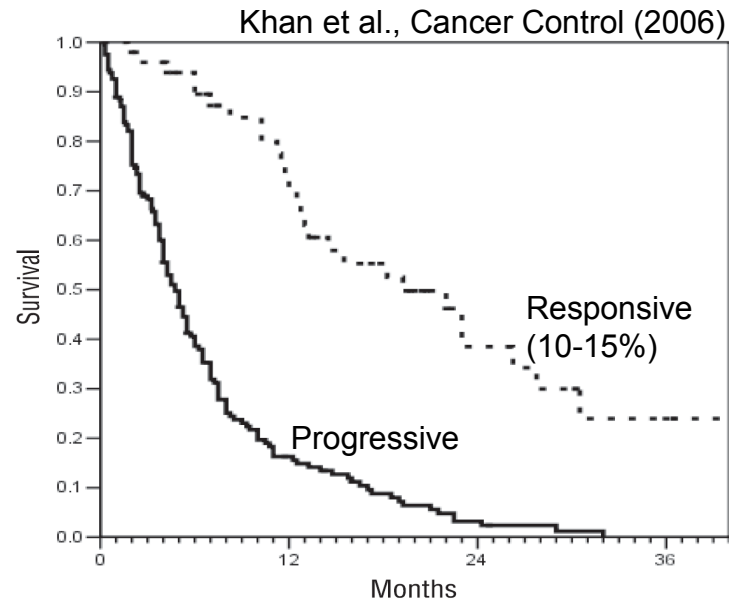


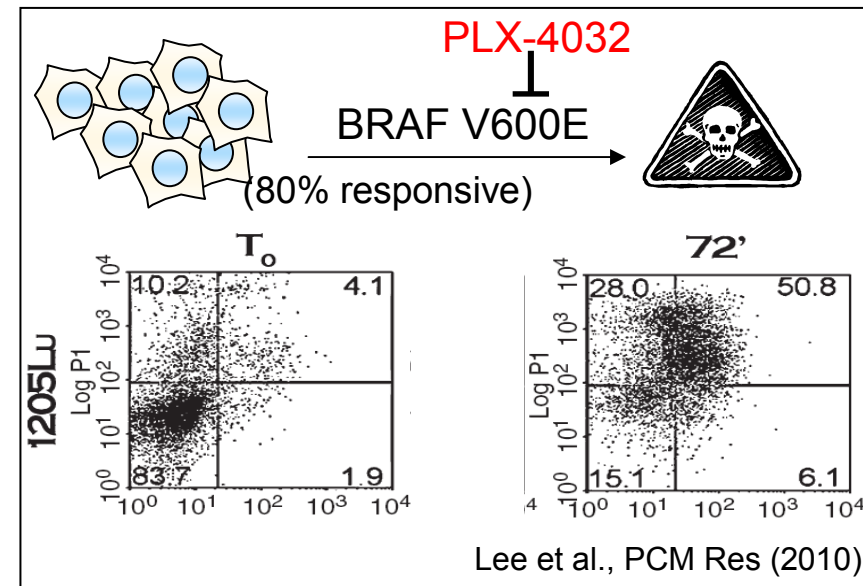
Identification of New Drug Leads to Target Melanoma Cells

Dr Robin Scaife
Molecular Discovery Systems
WAIMR

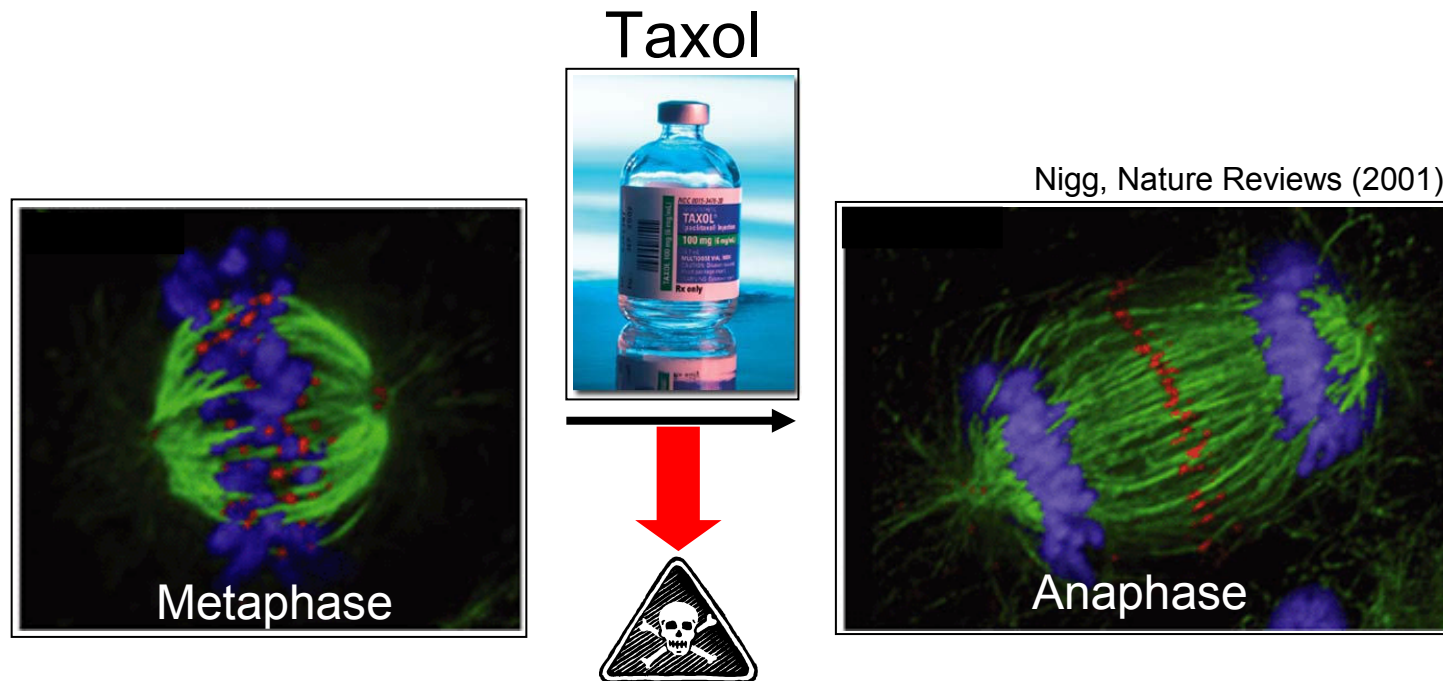
Chemotherapies



Treatment	Complete Response	Partial Response	Res
Untreated	N/A	N/A	
DTIC	1 (2%)	2 (4%)	
Multiagent DTIC Regimen	1 (5%)	2 (10%)	
Biochemotherapy	3 (5%)	7 (12%)	
Temozolomide and thalidomide	1 (5%)	1 (5%)	
N/A = not available			



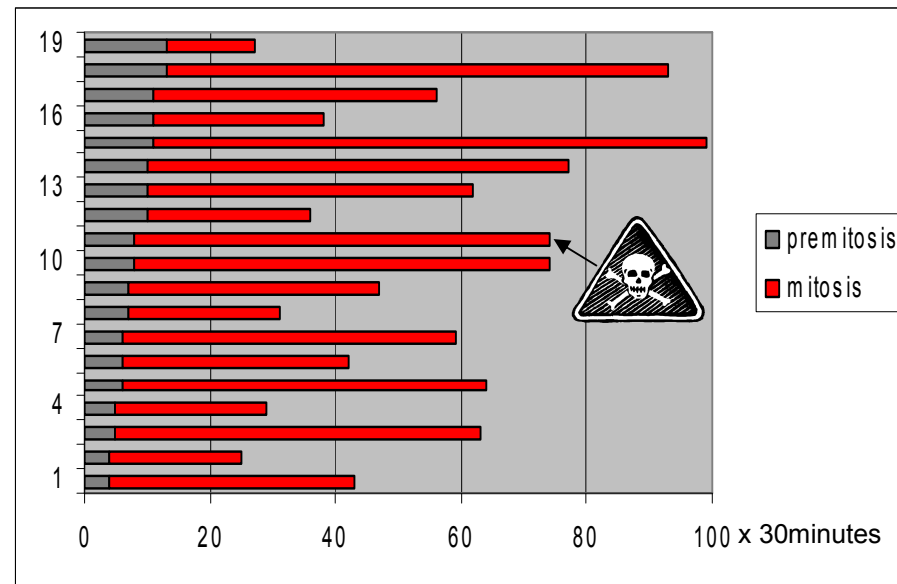
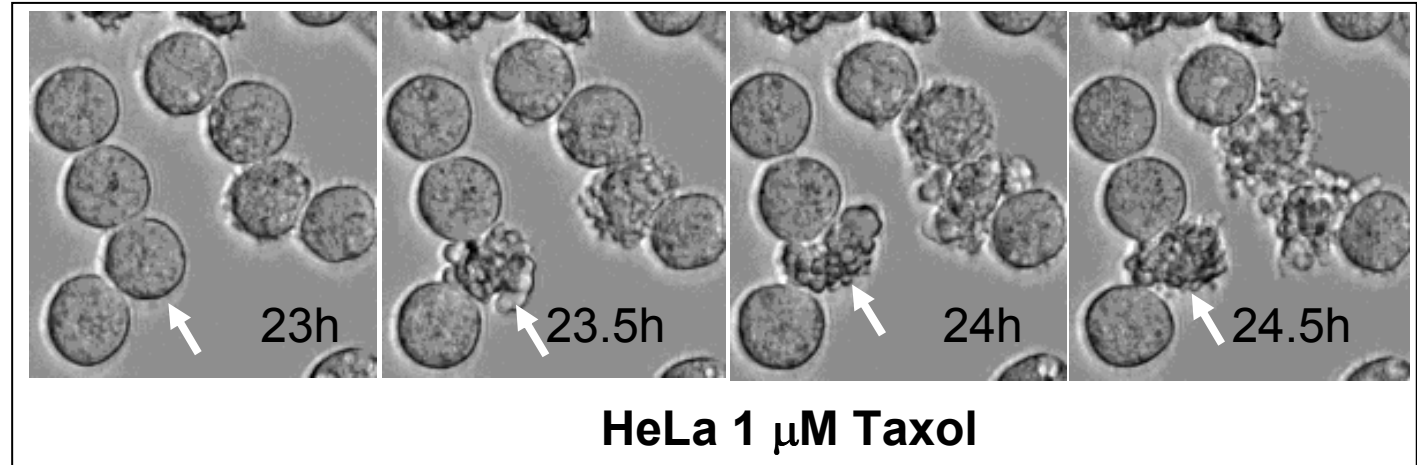
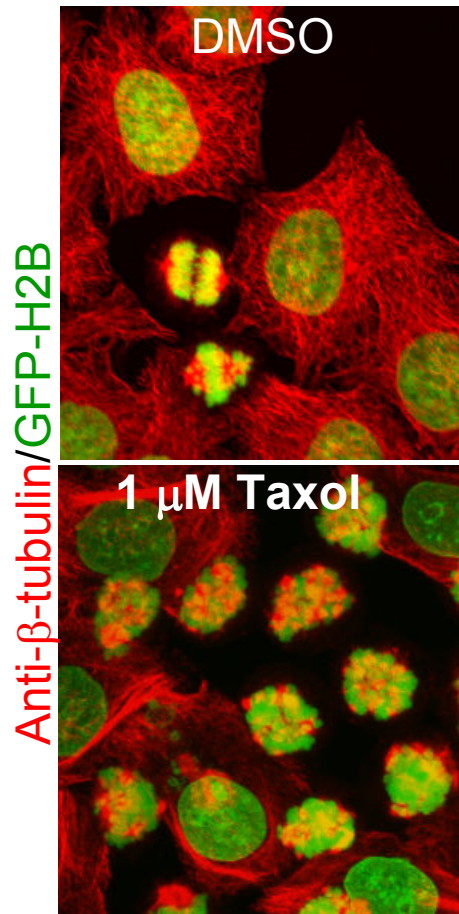
Mitotic Drugs



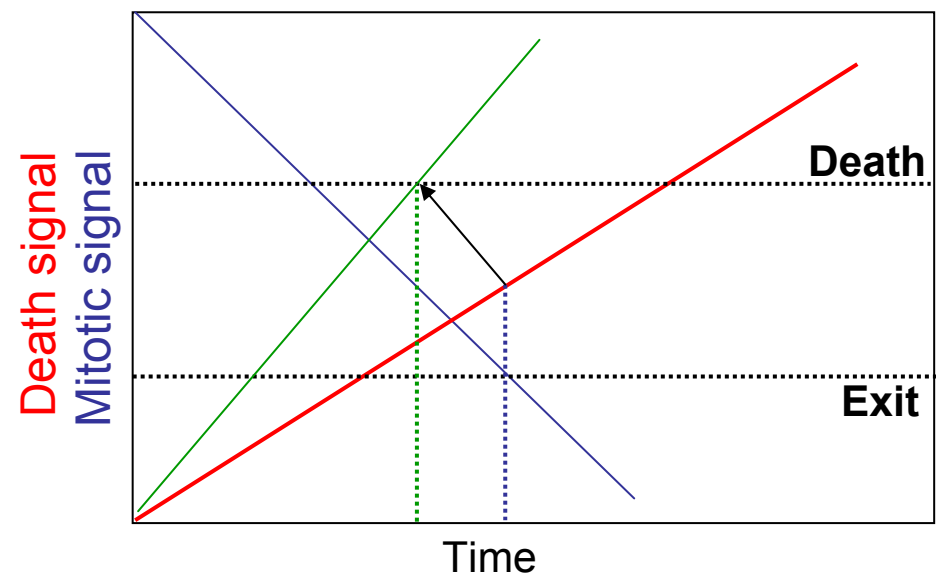
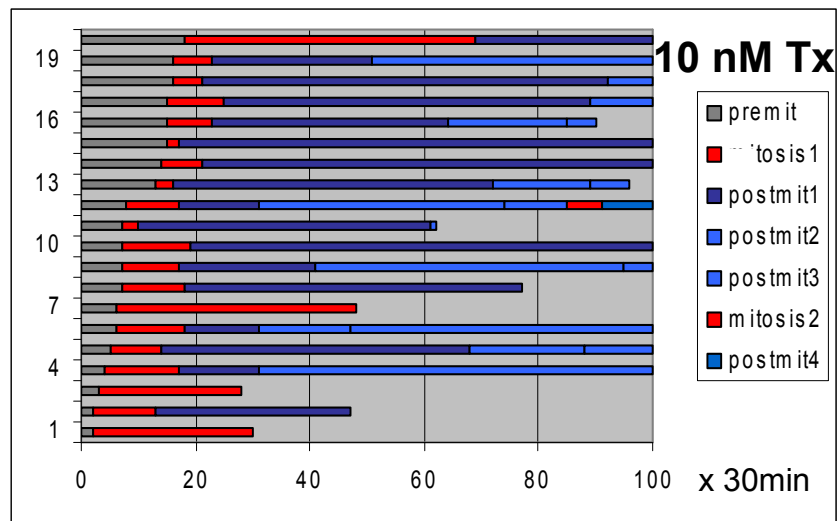
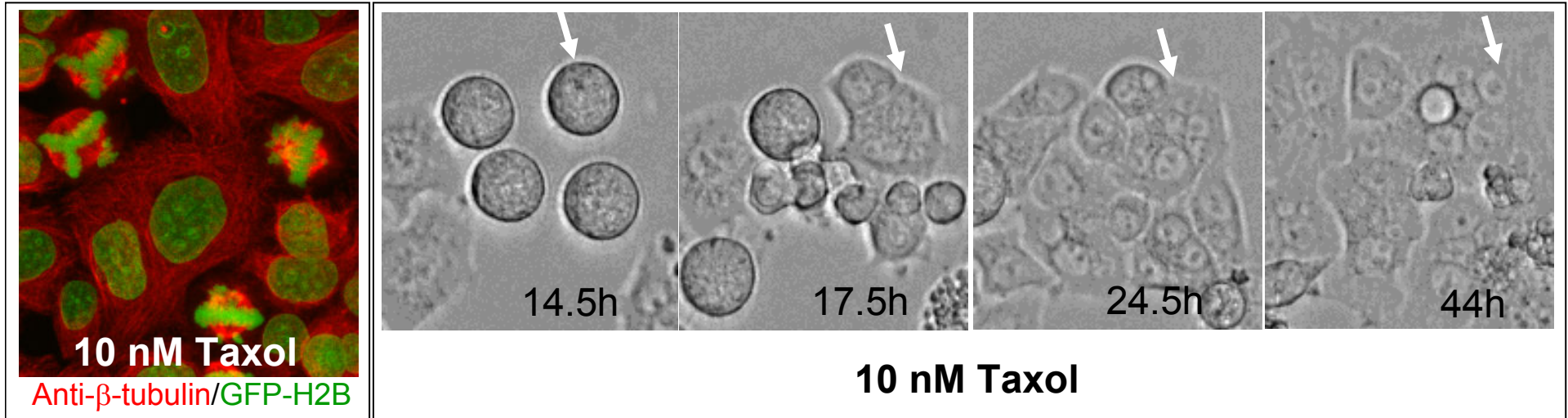
Paclitaxel added to medium at time 0 (μM)	Paclitaxel in cells at 20 h (μM)	Fold uptake
0.003	1.7 ± 0.2	570
0.01	8.3 ± 2.1	830
0.1	71.5 ± 6.2	720
1.0	241.0 ± 27.0	240

Jordan et al., Cancer Res (1996)

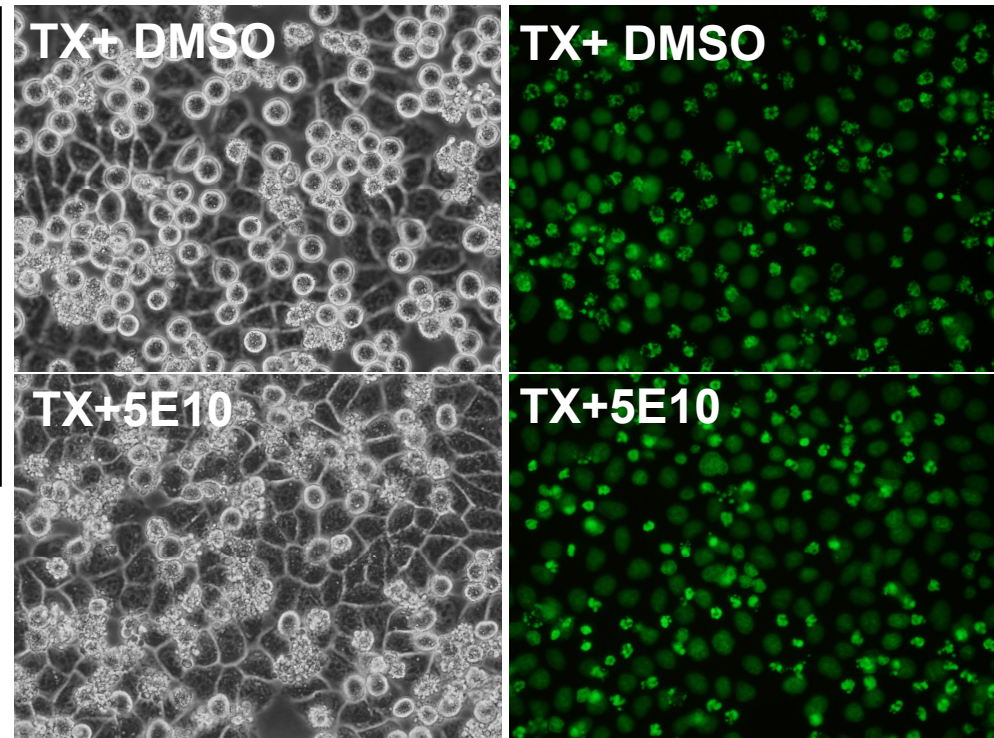
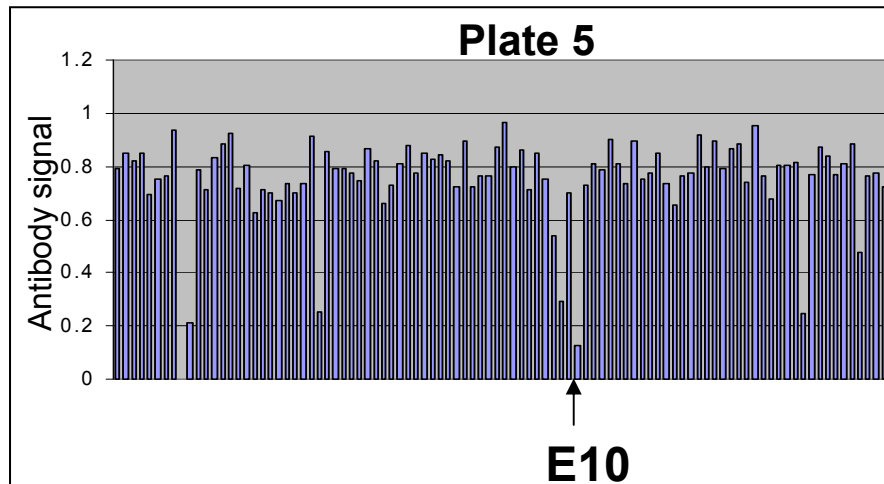
Mitotic Arrest



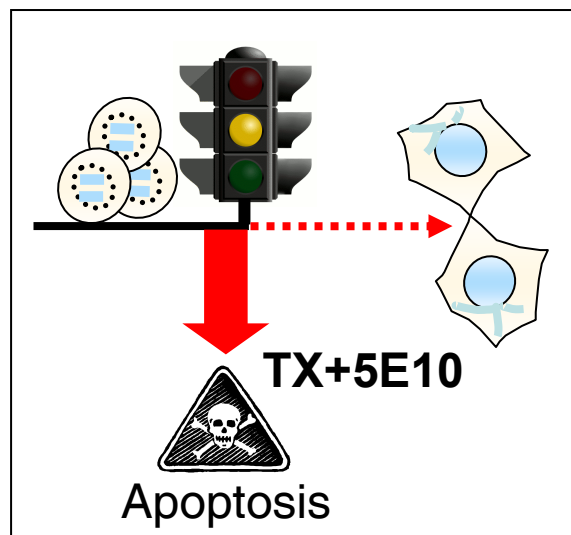
Mitotic Slippage



Induction of Mitotic Death

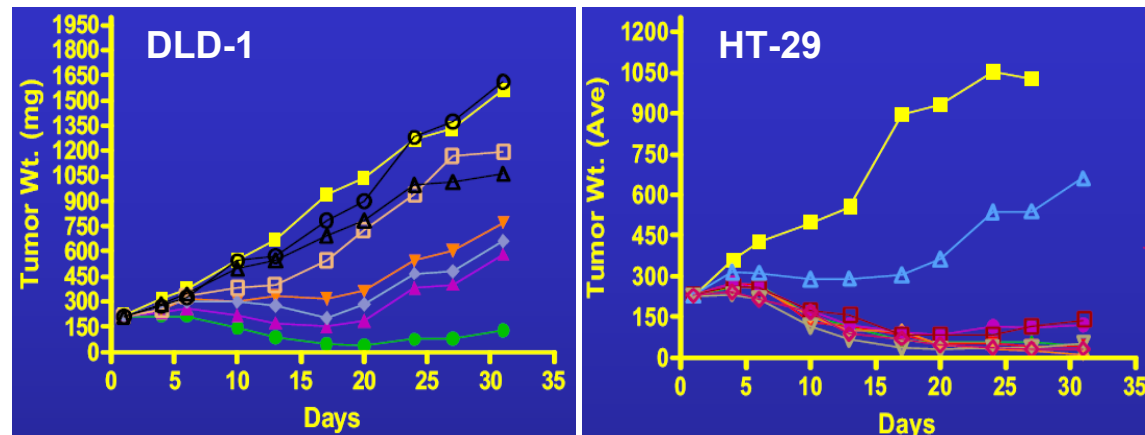
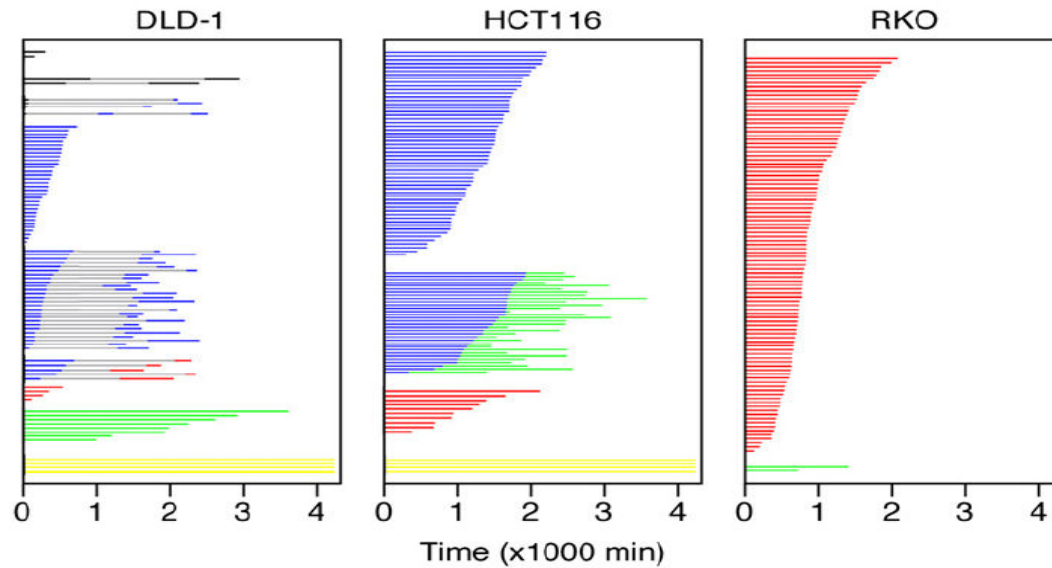


GFP-H2B

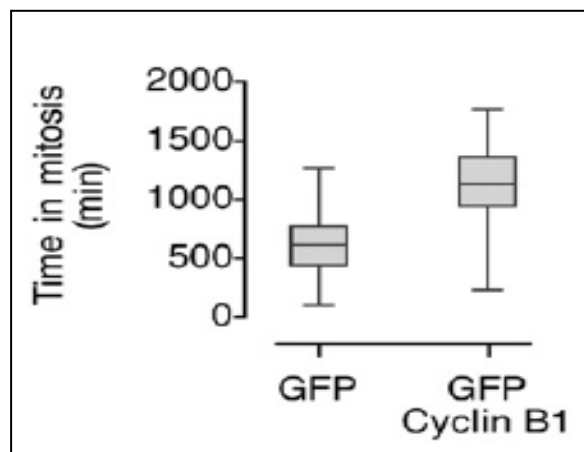
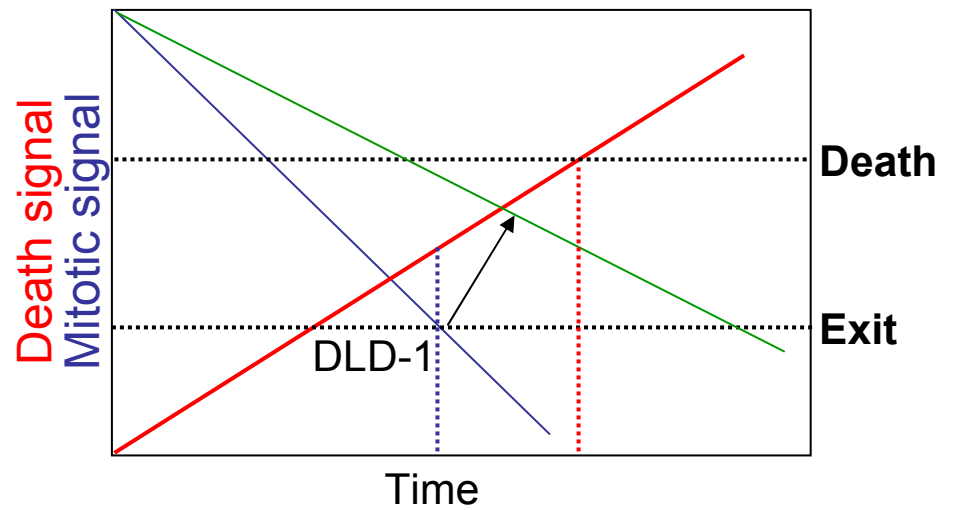
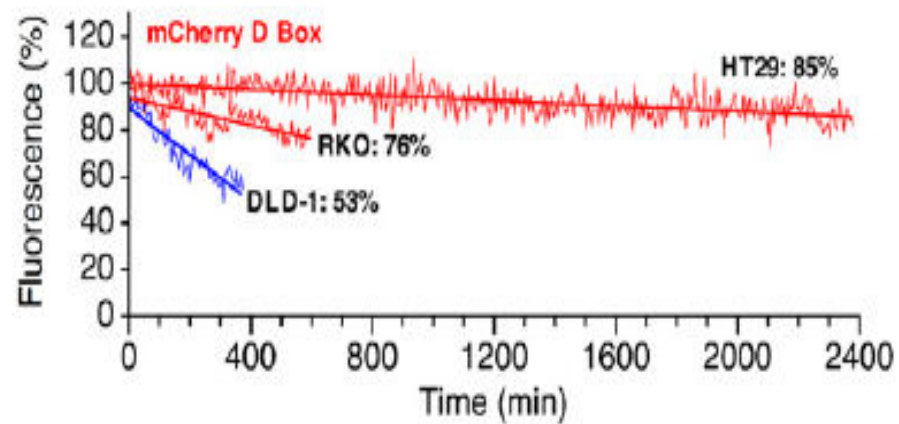


Cell Line Variation

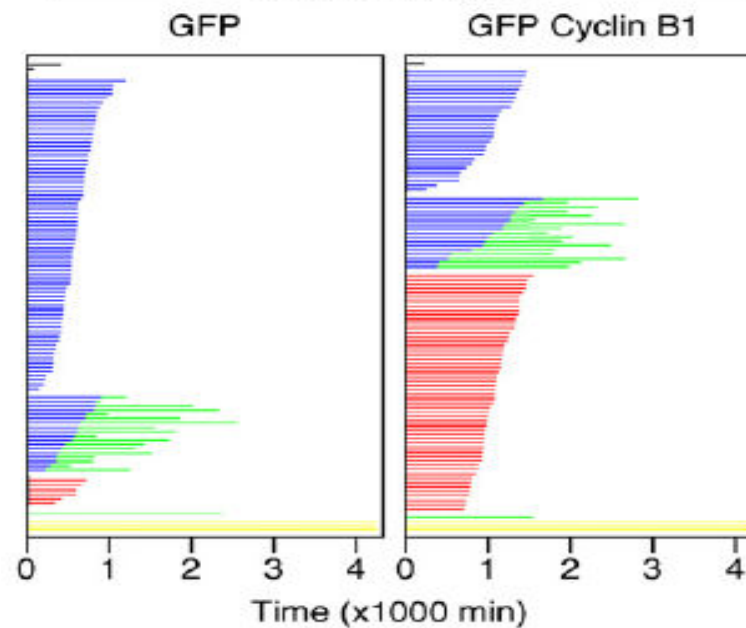
Gascoigne et al., Cancer Cell (2008)



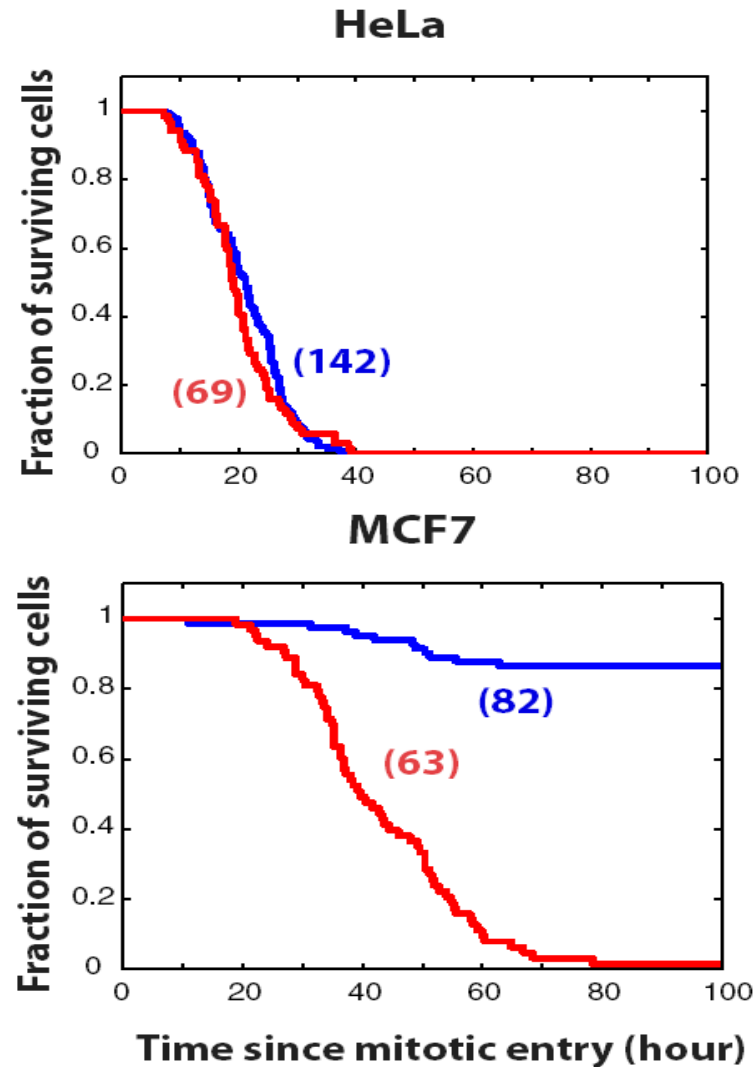
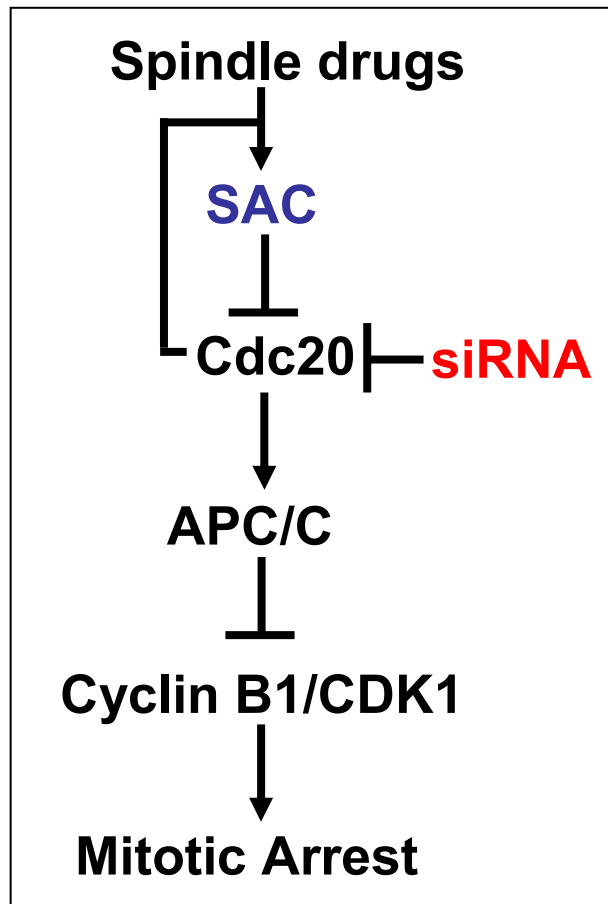
Longley et al., AACR (2006)



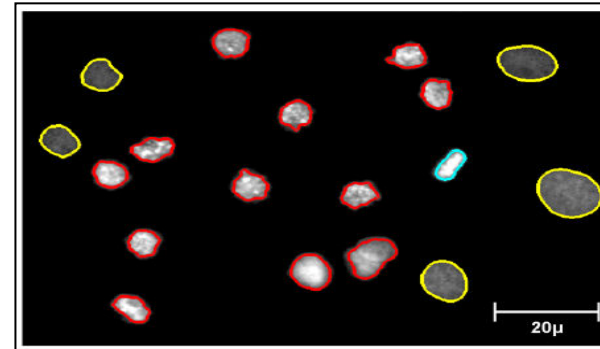
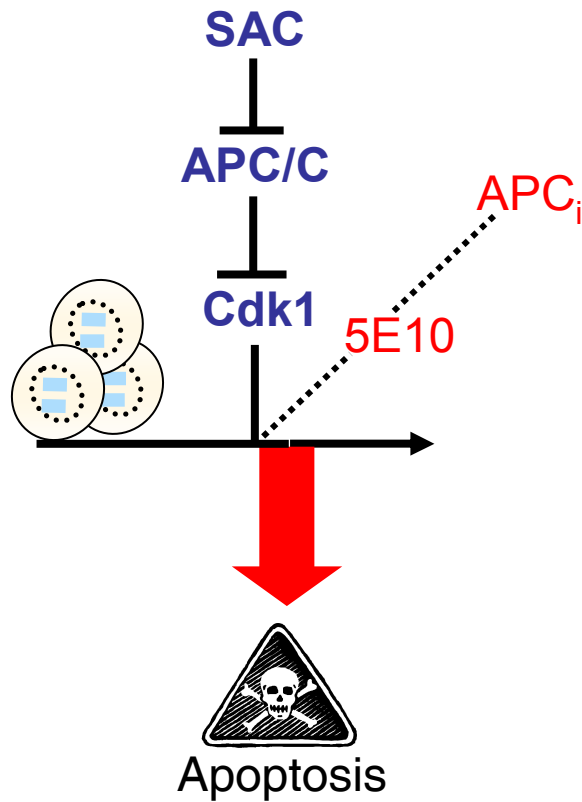
Gascoigne et al., Cancer Cell
(2008)



SAC-independent death



High-content Screening



New Melanoma Drug Leads ←

